

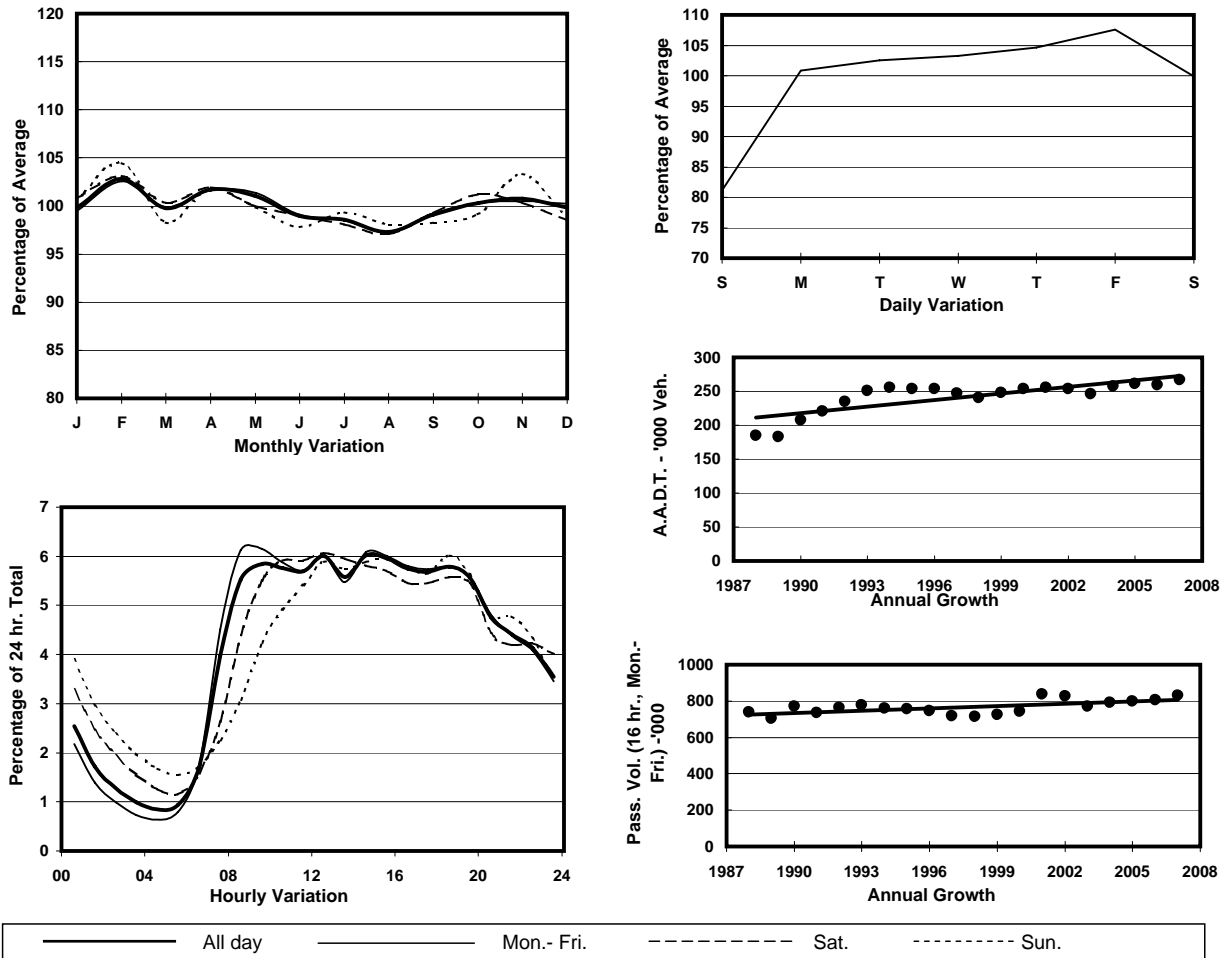
YEAR 2007

Location Screenline F-F(East end of Central District and the Peak)

Stations on Cordon/Screenline

1001, 1007, 2203 and 2213

## 1. TRAFFIC FLOW VARIATION AND GROWTH



## 2. TRAFFIC CHARACTERISTICS (BY DIRECTION)

Parameter	All - Day	Mon. - Fri.	Sat.	Sun.
<b>EAST BOUND</b>				
A.A.D.T.	132350	138350	133850	110250
R 12 / 24 - %	66.9	68.6	63.6	60.1
R 16 / 24 - %	85.7	87.6	81.7	79.2
AM Peak Hour	0900-1000	0800-0900	0900-1000	0900-1000
One-way flow at AM peak hour	7620	8470	7200	4460
T - % (AM)	-	12.8	-	-
PM Peak Hour	1600-1700	1600-1700	1600-1700	1800-1900
One-way flow at PM peak hour	7610	8050	7280	6610
T - % (PM)	-	8.4	-	-
Prop.of commercial vehicles - 16 hr.	-	9.1	-	-
<b>WEST BOUND</b>				
A.A.D.T.	134610	141490	135360	109170
R 12 / 24 - %	68.3	69.9	65.2	61.6
R 16 / 24 - %	87.1	88.6	83.7	81.5
AM Peak Hour	0900-1000	0900-1000	0900-1000	0900-1000
One-way flow at AM peak hour	7960	8770	7610	4830
T - % (AM)	-	9.7	-	-
PM Peak Hour	1800-1900	1800-1900	1800-1900	1800-1900
One-way flow at PM peak hour	8060	8520	7810	6610
T - % (PM)	-	9.7	-	-
Prop.of commercial vehicles - 16 hr.	-	8.6	-	-

## 3. OTHER INFORMATION AND COMMENT

**4. Vehicle classification and occupancy - Monday to Friday**

Time		Class of vehicle									
		Motor	Private	Taxi	Private	PLB	Goods veh.		Non	Fr. Bus	
		Cycle	Car		LB		Light	M & H	Fr. Bus	SD	DD
0700-0800	Pro	2.3	22.6	45.9	2.7	2.9	9.5	1.6	5.4	0.3	6.9
	Ocp	1.1	1.5	1.9	5.6	10.1	1.4	1.1	15.1	15.9	28.2
0800-0900	Pro	2.6	42.0	33.6	1.2	1.9	6.5	1.0	5.0	0.2	6.0
	Ocp	1.1	1.3	2.0	3.7	11.1	1.8	1.5	17.6	16.3	35.4
0900-1000 Peak Hour	Pro	2.4	33.6	38.5	1.0	1.4	13.1	1.2	2.6	0.2	6.0
	Ocp	1.1	1.4	2.0	1.7	9.2	1.7	1.5	14.7	12.3	22.1
1000-1100	Pro	2.3	29.3	35.5	0.9	1.2	21.5	2.0	2.1	0.2	4.9
	Ocp	1.1	1.4	1.9	3.4	6.3	1.6	1.6	10.2	9.7	18.9
1100-1200	Pro	2.2	29.9	36.1	1.4	1.3	21.1	2.0	1.8	0.1	4.1
	Ocp	1.1	1.5	2.0	2.5	6.8	1.7	1.5	11.5	11.9	19.9
1200-1300	Pro	2.7	31.7	41.3	1.5	1.0	14.4	1.9	1.8	0.1	3.6
	Ocp	1.1	1.5	2.2	3.0	8.5	1.7	1.6	9.5	13.5	21.2
1300-1400	Pro	2.4	31.7	39.7	0.7	1.3	15.6	2.1	2.1	0.1	4.1
	Ocp	1.1	1.5	2.1	3.0	8.2	1.8	1.5	10.1	12.8	20.9
1400-1500	Pro	2.1	37.4	36.0	1.6	1.2	14.7	1.5	1.5	0.1	3.8
	Ocp	1.0	1.6	2.1	3.1	10.6	1.7	1.8	10.2	11.2	21.4
1500-1600	Pro	2.6	38.7	31.7	1.9	1.2	15.8	1.8	2.0	0.1	4.1
	Ocp	1.1	1.6	2.1	3.3	9.5	1.7	1.6	11.2	19.8	23.0
1600-1700	Pro	2.3	37.7	33.2	1.7	1.0	15.4	1.7	2.0	0.2	4.9
	Ocp	1.1	1.5	2.1	2.7	10.7	1.8	1.7	9.1	12.4	24.4
1700-1800	Pro	3.2	37.2	37.3	1.1	1.3	10.7	1.1	2.5	0.1	5.6
	Ocp	1.1	1.5	2.1	3.6	11.5	1.8	1.7	11.0	17.7	27.8
1800-1900	Pro	3.2	43.6	37.0	0.4	1.3	5.0	0.5	3.7	0.1	5.2
	Ocp	1.1	1.5	2.3	3.5	13.2	1.7	1.4	19.1	22.6	36.2
1900-2000	Pro	2.8	43.2	40.7	0.3	1.4	3.6	0.4	2.2	0.1	5.2
	Ocp	1.1	1.4	2.3	2.4	13.5	1.6	1.8	17.6	18.5	29.4
2000-2100	Pro	1.9	37.0	49.1	0.2	1.5	2.4	0.6	2.1	0.2	5.1
	Ocp	1.4	1.4	2.1	2.0	10.0	1.6	1.8	15.2	10.5	23.6
2100-2200	Pro	1.9	32.4	54.7	0.3	1.6	3.0	0.3	1.0	0.1	4.7
	Ocp	1.1	1.5	2.2	2.3	9.9	1.4	2.3	16.1	10.2	20.3
2200-2300	Pro	2.0	33.5	53.4	0.1	1.6	2.1	0.6	1.3	0.2	5.4
	Ocp	1.1	1.6	2.1	2.0	11.2	1.7	1.2	14.5	8.4	17.1
16 hours	Pro	2.5	35.3	39.5	1.1	1.4	11.3	1.3	2.5	0.1	4.9
	Ocp	1.1	1.5	2.1	3.3	10.1	1.7	1.6	13.9	13.7	25.0

**Legend**

- Pro.** Proportion of vehicles in % (Sum may not add up to 100% due to figure rounding)
- Ocp.** Average occupancy of vehicles
- M & H** Medium and Heavy